

## Venue Information

### **Officer's Club**

**Marine Corps Base Hawaii  
Kaneohe Bay, Hawaii 96863  
For Info: (808) 254-7650**

### **Conference Lodging Rates:**

**The Lodge at Kaneohe Bay, \$91 per night.** Studio-type units with kitchenette, (microwave, toaster, refrigerator, coffee maker) AC, cable TV and DVD player.

**Registrants should call Teresa McCreary 808-544-0887 by Jan. 7 for reservations and guaranteed space availability.**

# **Don't Miss It!**

*Please help us  
continue to offer this  
annual in-service by  
inviting your music  
colleagues!*

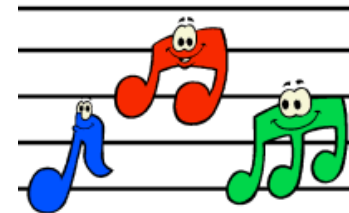
Bryan Hirata-Instrumental Music  
95-1200 Meheula Pkwy  
Mililani, HI 96789

*Hawaii Music Educators  
Association proudly*

*presents:*

## **2008 HAWAII MUSIC EDUCATORS ASSOCIATION: IN-SERVICE CONFERENCE**

*Featuring performances by:  
The Marine Forces Pacific Band,  
The Royal Hawaiian Band,  
Punahou School's 7<sup>th</sup> Grade  
Choir, and Chamber Music  
Hawaii*



**Thursday-Friday  
January 24-25, 2008  
Officer's Club  
Marine Corps Base  
Kaneohe Bay, HI 96863**

## HMEA EXECUTIVE BOARD:

Barbara McLain: Western Division President  
Teresa McCreary: President of HMEA  
Bryan Hirata: Treasurer of HMEA  
Amanda Lippert: Secretary of HMEA

## 2008 CLINICIANS INCLUDE:

### Dr. Tim Lautzenheizer:

Music Learning = Life Learning

### Jim Tinter of Ohio:

Jazz & Rock and Roll for Recorders and  
Improvisation with students from Ka Waihona o  
ka Na'auao Public Charter School

### Dr. Patti DeWitt of Texas:

Music Literacy (Sight Reading)

### Dale Mattis (of Yamaha) & Beth Uale:

Obtaining & Incorporating a Yamaha  
Keyboard Lab with students from Ka Waihona o  
ka Na'auao Public Charter School

### Bill Dick of Texas:

Teaching Orchestra For Non-String Players

### Michael Nakasone of the Royal Hawaiian Band:

Educational Outreach

### Robert W. Smith of Troy University:

Band Clinic with the Pacific Forces Marine  
Band

### Dr. Chet-Yeng Loong:

Integrating Orff-Schulwerk, Kodály and  
Dalcroze approaches with  
Malaysian/Indonesian music and  
Music in Early Childhood: Inspirations from  
Books, Stories & Recorded Music

### Dr. Joe Ruskowski

Music Technology Clinic

## Local and National Vendors Will Be Present

## DAILY SCHEDULE

### Thursday, January 24 & Friday, January 25

7:00-8:00 Registration &

Continental Breakfast

8:00-8:45 General Session

8:50-9:50 Workshop I

9:50-10:10 Break / Exhibits

10:10-11:10 Workshop II

11:15-12:15 Workshop III

12:15-1:30 Conference Lunch

1:40-2:40 Workshop IV

2:45-3:45 Workshop V

## SPECIAL EVENTS:

### OBDA Select Bands Concert:

Sat. Jan. 26 at 7:30pm at Pearl City  
Cultural Center at Pearl City High  
School

### ACDA Honor Choir Concert:

Sat. Jan 26 at 7:00pm at BYU-Hawaii  
in Laie & Sun. Jan. 27 at 3:00pm at  
Kawaiaha'o Church in Honolulu

### DOE: Vendor PO # 107759

Hawaii Music Educators Association  
C/O Bryan Hirata Treasurer  
95-1200 Meheula Pkwy  
Mililani, HI 96789

## REGISTRATION INFORMATION:

All pre-registrants will receive a  
base pass for easy access.

### Conference Pre-registration:

<http://www.hawaiiimea.org>

**BY JANUARY 18, 2008**

### Full Conference Both Days:

Including 2 continental breakfasts  
and 2 lunches

HMEA Member: \$125.00

Non-Member: \$150.00

### Student HMEA Members Both Days:

No meals-brown bag: FREE

Including meals: \$50

### One Day Admission: (Either Thursday or Friday)

Including 1 continental breakfast and  
1 lunch

HMEA Member: \$80.00

Non-Member: \$100.00

**Pre-register, get fed, get a base pass  
and save \$\$!**

### Conference Onsite Registration:

On-site registrants will need to stop  
at the visitor's center and provide  
registration, inspection, and proof of  
insurance.

### Both days/Full Conference:

Includes no meals

HMEA Member: \$150.00

Non-Member: \$180.00

### One Day Admission:

Includes no meals

HMEA Member: \$110.00

Non-Member: \$130.00

**Questions?** Contact Bryan Hirata at  
(808) 627-7358 or  
[bryan\\_hirata@notes.K12.hi.us](mailto:bryan_hirata@notes.K12.hi.us)